

THE NEW SEASON ART

Byzantium To the Bronx, A World of Art

By KAREN ROSENBERG

Dates and touring sites are subject to change.

September

THE ART OF DISSENT IN 17TH-CENTURY CHINA: MASTERPIECES OF MING LOYALIST ART FROM THE CHIH LO LOU COLLECTION Landscape paintings and calligraphies from a private collection highlight the traumatic collapse of the Ming dynasty. Through Jan. 2 at the Metropolitan Museum of Art, Manhattan; (212) 535-7710, metmuseum.org.

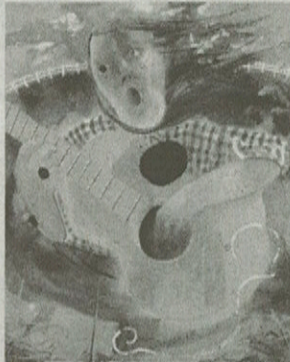
ASCO: ELITE OF THE OBSCURE, A RETROSPECTIVE, 1972-1987 Part of the Pacific Standard Time initiative, this show surveys the varied output of the Chicano performance and conceptual art group Asco. Through Dec. 4 at the Los Angeles County Museum of Art; (323) 857-6000, lacma.org. Travels to the Williams College Museum of Art, Williamstown (Feb. 2 through July 29).

BERTRAND GOLDBERG: ARCHITECTURE OF INVENTION The first comprehensive look at this Chicago architect will include his graphic and furniture design in addition to drawings, models and photographs. Through Jan. 15 at the Art Institute of Chicago; (312) 443-3600, artic.edu.

CHARLINE VON HEYL The artist's first museum survey will include collage-based works on paper alongside her dynamic abstract paintings. Through Feb. 19 at the Institute of Contemporary Art, University of Pennsylvania, Philadelphia; (215) 898-7108, icaphila.org. Travels to the Institute of Contemporary Art, Boston (March 21 through July 8).

CIRCA 1971: EARLY VIDEO AND FILM FROM THE EAI ARCHIVE Dia celebrates the 40th anniversary of Electronic Arts Intermix with this show of 20 moving-image works from the group's archive. Through Sept. 4, 2012, at Dia:Beacon; (845) 440-0100, diaart.org.

FLUXUS AND THE ESSENTIAL QUESTIONS OF LIFE This reassessment of the quintessen-



NEUBERGER MUSEUM OF ART



MUSÉE DU LOUVRE, RÉUNION DES MUSÉES NATIONAUX / ART RESOURCE, NY

Clockwise from top, Dana Schutz's "Guitar Girl" (2009); "The Artist's Home," by Man Ray, around 1931; and "Injured Turk, Falling Backward" by Anne-Louis Girodet de Roucy-Trioson (1767-1824).



MAN RAY TRUST/ARTISTS RIGHTS SOCIETY (ARS), NEW YORK/ADAGP, PARIS/COURTESY OF THE PENROSE COLLECTION.

tial do-it-yourself art movement features some 100 works from the 1960s and '70s, drawn largely from Dartmouth College's Hood Museum of Art. Through Dec. 3 at the Grey Art Gallery, New York University, Manhattan; (212) 998-6780, nyu.edu/greyart. Travels to the University of Michigan Museum of Art, Ann Arbor (Feb. 25 through May 20).

INFINITE JEST: CARICATURE AND SATIRE FROM LEONARDO TO LEVINE This collection-based show finds levity in drawings and prints from the Italian Renaissance to the present, including works by Goya, Daumier and Al Hirschfeld. Through March 4 at the Metropolitan Museum of Art; (212) 535-7710, metmuseum.org.

INGRES AT THE MORGAN This group of 18 drawings by the French master includes a

large-scale version of his famous "Odalisque and Slave" (1839). Through Nov. 27 at the Morgan Library & Museum, Manhattan; (212) 685-0008, themorgan.org.

THE LIFE AND DEATH OF BUILDINGS A distinctly post-9/11 perspective haunts this survey of architectural photography since 1840. Through Nov. 6 at the Princeton University Art Museum, Princeton; (609) 258-3788, artmuseum.princeton.edu.

MAN RAY / LEE MILLER The complex romantic and student-teacher relationship of these two Surrealists is explored through vintage photographs, paintings, sculpture and drawings. Through Dec. 4 at the Peabody Essex Museum, Salem, Mass.; (978) 745-9500, pem.org.

THE PARADE: NATHALIE DJURBERG WITH MUSIC BY HANS BERG The artist's gleefully

Part Three

POP • CLASSICAL • ART • ARCHITECTURE